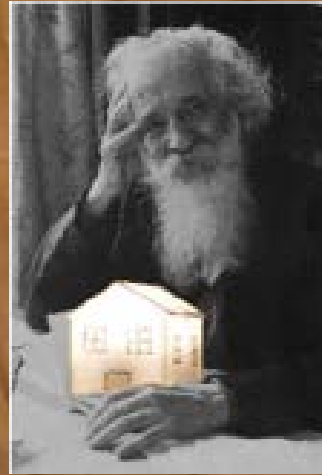




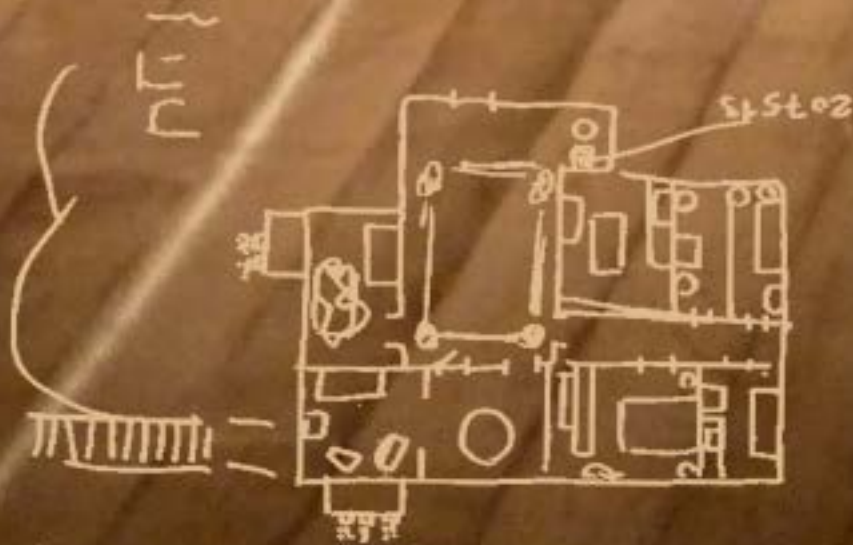
The Frog in the bottom of the Well
believes that the Sky is round

VELO THEATRE

MR BRIN D'AVOINE HAD 400 HOUSES



Two man servants welcome you to Mr Brin d'Avoine's collection, a refuge for an imaginary and fancy world. On entering you will leave your usual place as a spectator and become a privileged visitor in our dreamlike house.





HOME IS OUR FIRST NATIVE COUNTRY

We all are filled with the memories of our first home and the first experiences of the world in which we lived. Home is our first playground, a place for daydreaming that never leaves us.

Flop has conceived many mechanical works projecting sensitive landscapes of shade and light which compose the furniture. Surprising mirrors and astronomical binoculars invent stars in the depth of the sea.

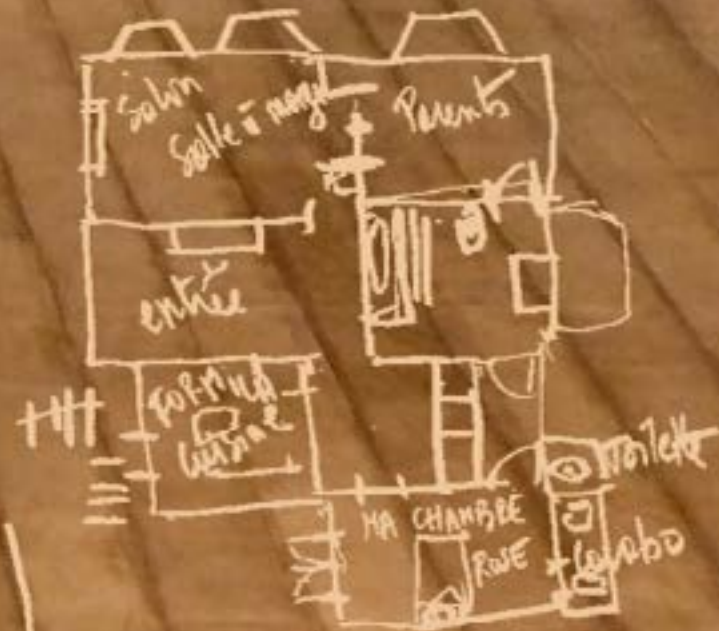
HOME HOLDS CHILDHOOD IN ITS ARMS

Home is the place that has most influences on the building of our spatial and emotional marks.

« Home is like a shelter, it is this wrapping and protective body that covers the maternal envelope » Our mother's body being our first refuge.

According to Bachelard we are all inhabited by the house in which we were born, our original « home ».

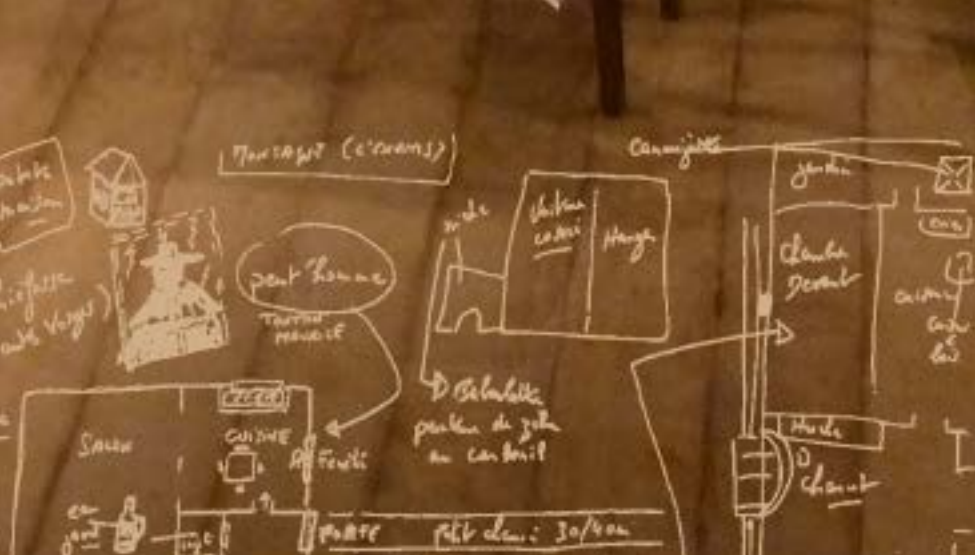




THE VELO THÉÂTRE

The founders of the Vélo Théâtre Charlot Lemoine and Tania Castaing, artists from the Angers School of Art have been working since 1981 to invent an intimate and poetic relationship with the audience. In 1997, José Lopez, stage and lighting engineer, joined the team. He accompanies the Vélo Théâtre's creations with his bright eye.

Convinced that emotion comes from the fragile relationship that the actor establishes with the objets he brings to life on stage and along with



other artists, they became the precursors of an original vocabulary, a new form of expression which we now call the «Object Theatre». Since then they have added text to their creations, yet their jubilation in manipulating objects remains intact and intense.

In 1993, for the needs of a show, the company settled in an old crystallized fruit factory in Apt, in the South-East of France. Since then this cosmopolitan place has become their home base, nourished by the company's travels and adventures. The Velo Theatre, poetic migrant and pilgrim, silent or polyglot, has travelled around the world for more than 30 years. With its wonderful stories, it speaks to everyone.



COLLABORATIONS

Creating this show was a good opportunity for us to resume and initiate new collaborations.

Dramaturgy

We had the pleasure to continue our work with Francesca Bettini from Italy. As an actress and playwright, Francesca collaborates with different theatre companies some of which are very close to us (Skappa, Théâtre Marnarf, Lili Désastres, Material Theater...). We have already worked together on the productions of «There's a rabbit in the moon» and «Then he ate me » in 2004 and 2010.

Scenographic Installations

We were also very glad to renew our collaboration with Philippe Lefebvre/Flop, artist and co-founder of the Group Zur. He also studied at the Angers School of Art, we have always been very touched by his subtle and poetic universe. In 1989 we created together «Le complot du rêve» an itinerant show with which we sailed down the Amazon River.



Music

Fabien Cartalade's musical skill is an asset to the universe of our house, inhabited by sounds, noises and memories. Musician with a classical education (trumpet and trombone), Fabien worked with both jazz and rock'n roll bands and philharmonic orchestras. He also added drums, composition and other strings to his bow. (Les Négresses Vertes, Raoul Petite, Les Robertes, Gaiô)

Film

With Florent Ginestet we shot the 16mm film bringing an intemporal and universal dimension to the show. It is both a meta-narration with the actors who go back and forth from the stage to the screen and a pictorial object amongst the other installations.

PRESS

« Entering the universe of Mr Brin d'Avoine is diving in the twists and turns of our memories. Whatever our age, between 9 and 79, we all keep in mind remembrances of our childhood houses. In this show time stands still, the dramatic conventions are shaken up. The characters reveal the memories of each and everyone.

The doors of this sensorial world open and the spectator is invited to travel in the very heart of this dreamt house. With intelligence and sensitivity, the poetry of Flop Lefebvre's installations, the delicacy of the sound and musical world of Fabien Cartalade and the aerial text, tinged with humour and emotion, accompany us, for an hour, in the hidden recesses of our first playground. A beautiful moment of poetry ! »

La Marseillaise



Le monde d'aujourd'hui est un monde d'images



CASTING AND PRODUCTION

For 60 people from 6 years onwards

Duration : 1h 15

With Charlot Lemoine, Tania Castaing or Dominique Vissuzaine,
José Lopez, Fabien Cartalade

Dramaturgy Francesca Bettini

Scenography Philippe Lefebvre (Flop) and Vélo Théâtre

Music and sound engineering Fabien Cartalade

Light engineering José Lopez

Film Florent Ginestet

Production Vélo Théâtre

Co-production C. C. Pablo Picasso, Homécourt, 3bisF, Aix-en-Provence, L'Yonne en Scène, Auxerre, Théâtre Massalia, Marseille
The Vélo Théâtre is supported by the Ministry of Culture/DRAC Provence Alpes Côte d'Azur, the Regional Council of Provence Alpes Côte d'Azur, the General Council of Vaucluse (84), the City of Apt and the French Institute when touring abroad.

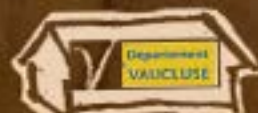
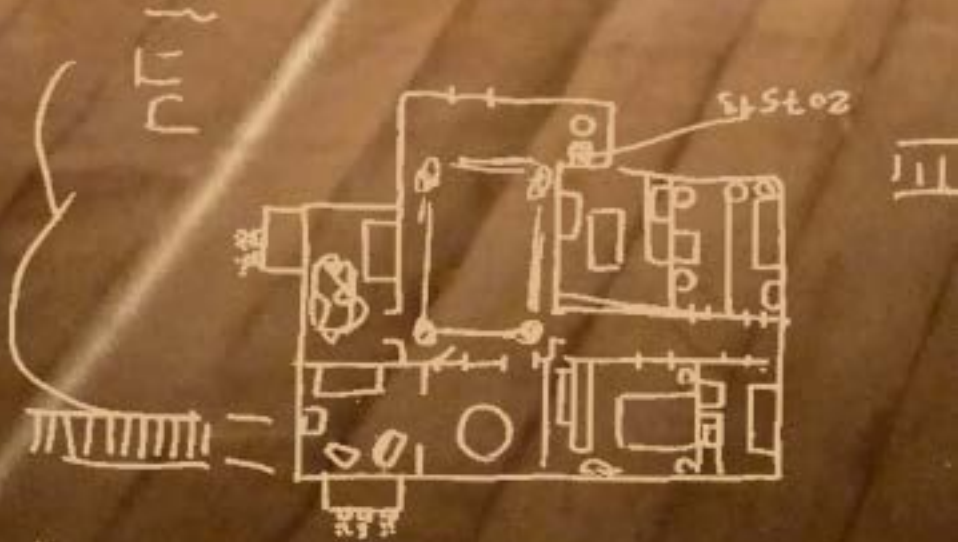
Contact Booking

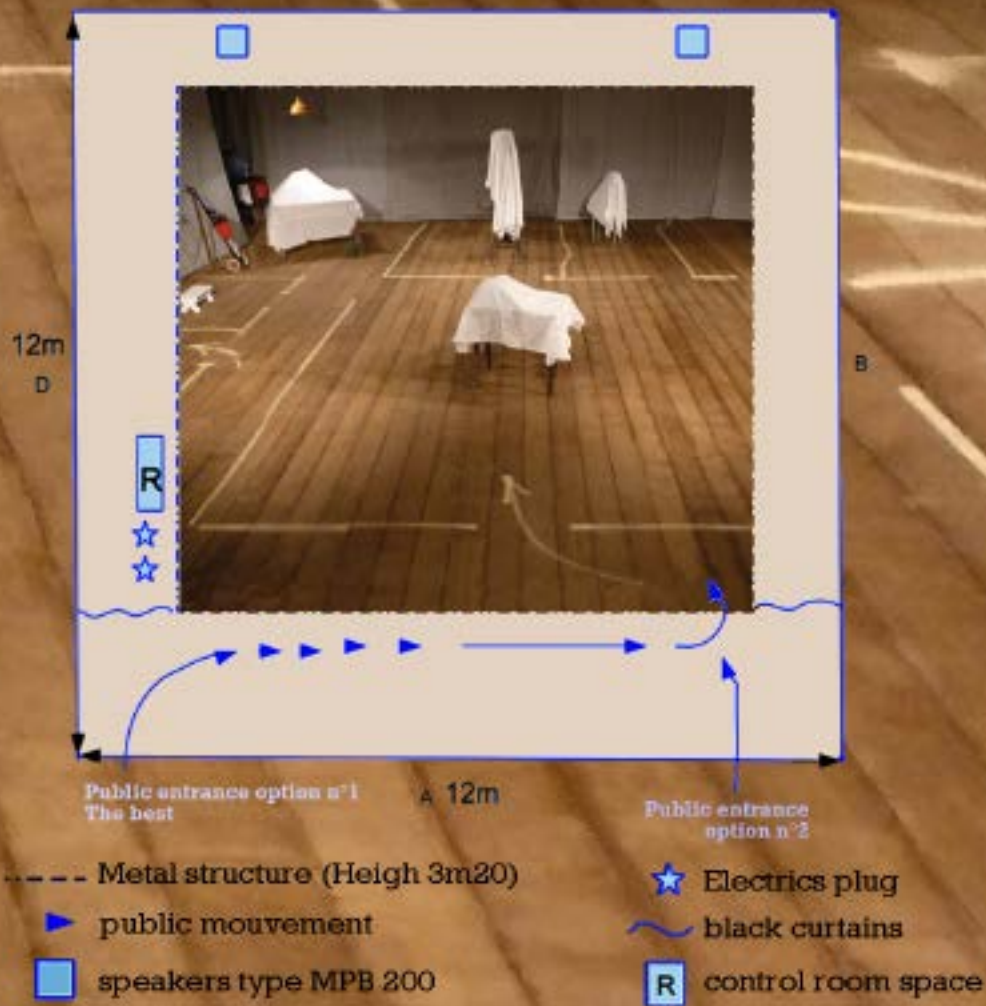
Aurélie Aloy

+33 (0)6 74 77 04 42 / compagnie@velotheatre.com

Charlot Lemoine +33 (0)6 11 64 01 71

Vélo Théâtre – Pépinière d'Entreprises – 171 av. Eugène Baudouin
84400 Apt – France - www.velotheatre.com





TECHNICAL RIDER

Performance and exhibition

No tiers nor chairs required. We are autonomous concerning the seats
Complete darkness required. Stage space : 12 m x 12 m* / Height : 3 m20

Crew 2 technicians for the load-in and the set up – 5 hours minimum
 2 technicians for the strike and load-out – 2 hours 30

Lighting 2 electric power supplies : 2 x 16 Amps
 2 Par cans 64 in CP 62 on stands
 10 electric extension cables, 10 m each

Sound 2 speakers type MPB 200
 1 amplifier
 1 Sound desk

Soft goods 1 large broom, 2 tables, 4 big bottles of water for the team
 1 or 2 coat racks with hangers + 1 table for the bags of the audience

Remarks *Please contact us if the dimensions of your stage are inferior to 12 x 12 m. 10 m x 10 m is a minimum for this show that gathers audience, actors and set on the stage. The sides BCD of our structure have to be hidden to the public's eyes.

To respect the schedule of the set up, all sorts of furniture have to be removed before our arrival. Necessity of creating a daylight free double-door entrance for the audience. A space is also necessary for the spectators' coats and bags. A parking place near the venue is necessary for our 20M3 truck.

Please contact us in case some of the elements pointed out in this technical rider are not clear enough for you :

José Lopez : 33 (0)6 32 25 03 79. Charlot Lemoine : 33 (0)6 11 64 01 71



Épinière d'ENTREPRISES. Route de Buxy 84400 APT FRANCE
Tel: +33.4.90.04.85.25.
e MAIL: Velos @ Velotheatre.com www.Velotheatre.com